

NE Montessori School Final Plans

“Something great is about to happen”

Board Meeting

September 4, 2018



Think. Learn. **Grow.**

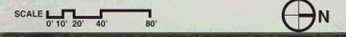
www.dmschools.org

E DOUGLAS AVENUE

COLFAX AVENUE

KEYNOTES:

- A** STAFF PARKING
- B** PARENT PARKING
- C** ENTRY DROP-OFF PLAZA
- D** DISCOVERY GARDEN
- E** PERIMETER FENCE
- F** FUTURE ROAD
- G** PROPERTY LINE
- H** PAVED PLAY COURT/ FIRE ACCESS
- I** DRIVE CONNECTION TO COLFAX AVE
- J** STUDENT GARDEN
- K** LOWER PLAY AREA
- L** UPPER PLAY AREA
- M** OUTDOOR CLASSROOM
- N** AMPHITHEATER/ OUTDOOR CLASSROOM
- O** WALKING PATH
- P** COURTYARD
- Q** NATURAL AREA
- R** KITCHEN DELIVERY
- S** TRASH ENCLOSURE AND STORAGE





- ADMINISTRATIVE
- PRIMARY CLASSROOMS
- LOWER ELEMENTARY
- UPPER ELEMENTARY
- 7TH & 8TH GRADE CLASSROOMS
- GYMNASIUM
- LIBRARY
- CAFETERIA / MULTIPURPOSE ROOM





DMPS NE MONTESSORI SCHOOL
ENTRY PLAZA
NOT TO SCALE





DMPS NE MONTESSORI SCHOOL
GYM & CAFETERIA
NOT TO SCALE





DMPS NE MONTESSORI SCHOOL
WEST COURTYARD
NOT TO SCALE

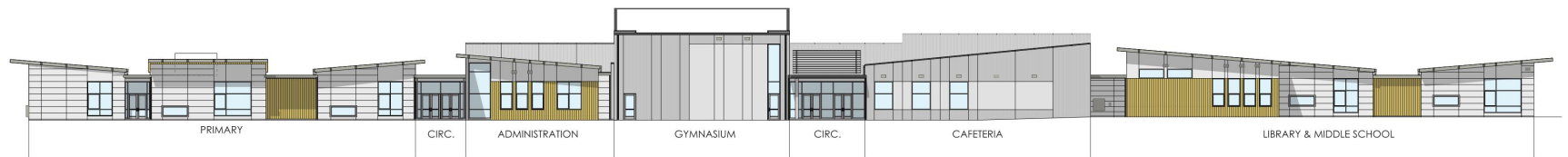




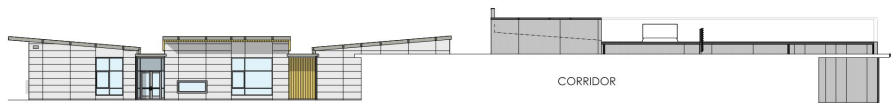
DMPS NE MONTESSORI SCHOOL
LIBRARY-MEDIA CENTER
NOT TO SCALE



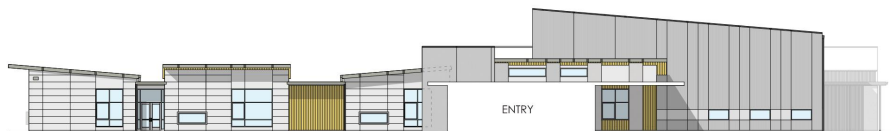
WEST ELEVATION



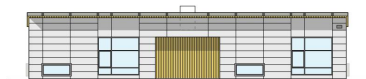
EAST ELEVATION



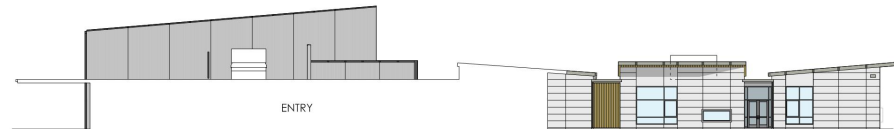
CORRIDOR



ENTRY



SOUTH ELEVATION



ENTRY

NORTH ELEVATION

DMPS NE MONTESSORI SCHOOL
ELEVATIONS
1/16" = 1'



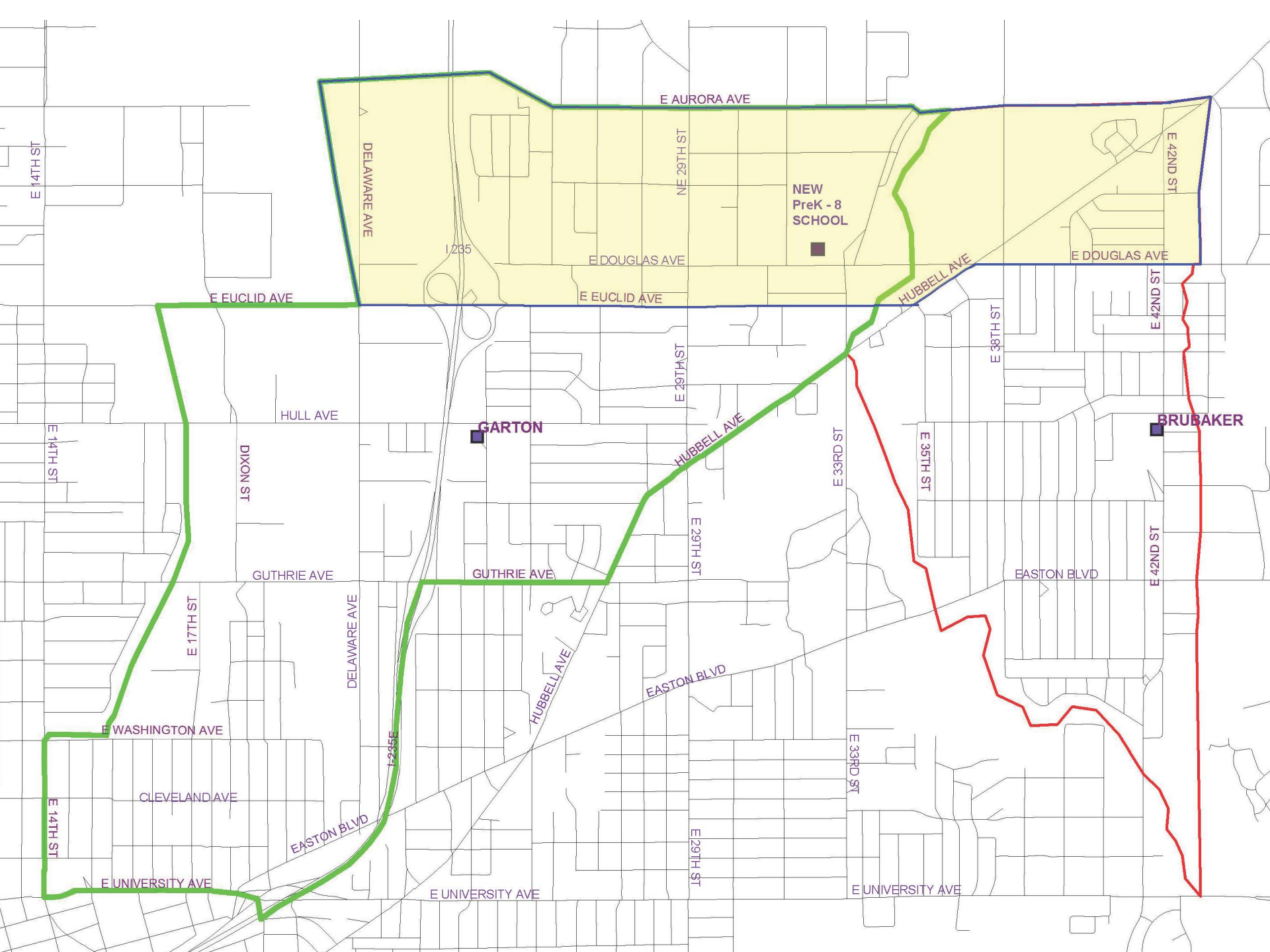
III III III III
COPYRIGHT 2018 STUDIO MELEE

Highlights of project

- Pre K – 8
- 2nd Montessori program
- Student capacity - 450
- Safety/security components high priority
- Model for energy efficiency to optimize our resources

New Attendance Area Information

- Students currently within the new NE school attendance area will have the new school as their neighborhood school.
- All students in the attendance area will attend the new school August 2020.
- Schools impacted the most are Brubaker, Garton, Goodrell, and Hoyt.
- Any students from outside the new neighborhood school attendance area will be required to submit a request for within district/open enrollment.



Communication timeline

- Neighborhood (Douglas Acres) update on construction – September 11, 2018
- Individual school meetings to discuss attendance area and construction updates – Spring 2019
- Ongoing education of neighborhood school families

Construction TimeLine

- Preliminary plans August 14, 2018
- September 4, 2018– Board review and approval of final plans
- Groundbreaking ceremony – Early November
- Fall/early winter 2018 – Construction start
- July 1, 2020 – Completion

Project budget – Estimated \$17,000,000 from SWP

**SOMETHING GREAT IS COMING
FOR OUR STUDENTS AND
FAMILIES IN NE DES MOINES**



Think. Learn. **Grow.**

www.dmschools.org